

# BLA15-06H-AA1 Technical Specification

Item		Specification				Remark		
1	Communication Interface	PWM				Signal Voltage:V	HIGH : min. 2.0V max. Vcc	
							LOW : min. 0.0V max. 0.45V	
						Frame Rate:T	3.0~30ms (Default 14.25ms)	
						CW/Center/CCW:Td	920/1520/2120µs (Resolution recommends less than 1µs.)	
		S.BUS / S.BUS2				Futaba Serial Protocol (Please ask us for more information.)		
2	International Protection Code	IP67				Waterproof and dustproof		
3	Rated Voltage	DC 6.0~DC 7.4V				-		
4	Operating Voltage	DC 4.0~DC 8.4V				-		
5	Standby Current	≤ 50mA				at 6.0~7.4V		
6	Starting Current*	≤ 2.6A				at 7.4V		
7	Consumption Current*	LL	Me	UL	unit	at 7.4V , No-Load		
		115	230	345	mA	LL : Low Limit Me : Medium Value UL : Upper Limit		
8	Max. Torque*	LL	Me	UL	unit	at 7.4V		
		7.2	10.3	13.4	kgf·cm			
		0.7	1.0	1.3	N·m			
		100.0	143.0	186.1	ozf·in			
			8.3	kgf·cm	at 6.0V Medium Value			
9	Rated Torque*		1.0		kgf·cm	at 7.4V		
			0.10		N·m	10% of Max. Torque		
			14		ozf·in			
10	No Load Speed*	LL	Me	UL	unit	at 7.4V		
		0.12	0.15	0.18	s/60°			
		333	400	500	°/s			
		56	67	83	rpm			
			0.18	s/60°	at 6.0V Medium Value			
11	Default Travel Angle	CW 60° (920us) CCW 60° (2120us)				-		
12	Max Travel Angle	CW 90° (920us) CCW 90° (2120us)				Programing tool (CIU-2 or CIU-3,S-Link) required.		
13	BackLash*	≤ 0.5°				-		
14	Operating Temperature Range	-30~+70°C (-22~158°F)				-		
15	Storage Temperature Range	-40~+80°C (-40~176°F)				-		
16	Outer Dimension	39.4 x 15.0 x 29.4mm (1.55 x 0.59 x 1.16 in)				Refer to Outer Dimension		
17	Weight	44g				With horn and screws Without cable		
18	Case Material	Aluminum				Surface : Anodizing Salt Water Resistance		
19	Gear Set Material	Steel				Surface : Hardening treatment		
20	Gear bearing	2 ball bearing				-		
21	Position Sensor	Magnetic Encoder				-		
22	Motor Type	Brushless DC Motor				-		
23	Cable	Non-Shielded Cable (Detachable)				Cable Length : 15.75 inch (400mm)		
24	Connector	Manufacture	Neltron Industrial Co., Ltd.					
		Type	120505-04P-FA-PB					
		Mating	4P M5FS-STR 400MM etc.					
		Pin Assignment	1	White	Non Connection			
			2	Red	PWM / S.BUS			
		3	Green	Battery(-)				
		4	Black	Battery(+)				
25	MTTF *	Operating time > 700h (TBC)				<u>Operating Condition</u> • at 7.4V • ±60°, 0.5Hz sweep <u>Test Condition</u> • Load : 1.0 kgf·cm		
26	Vibration Resistance *	Operating time > 350h (TBC)				<u>Operating Condition</u> • at 7.4V • ±60°, 0.5Hz sweep • No-Load		
						<u>Test Condition (sine wave)</u> • Frequency : 10 to 500Hz (sweep 1oct/min, amplitude limit 2mm) • Acceleration : 300m/s <sup>2</sup> • Vibration axis : X,Y,Z		

\* At 23±5°C (Initial Performance Data)

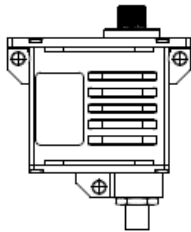
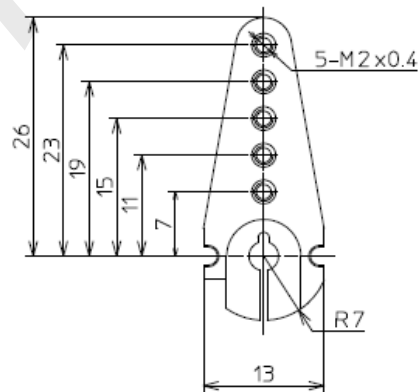
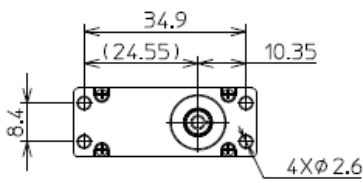
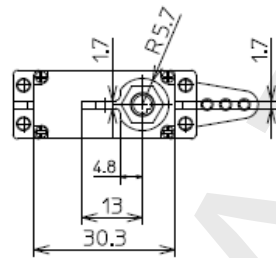
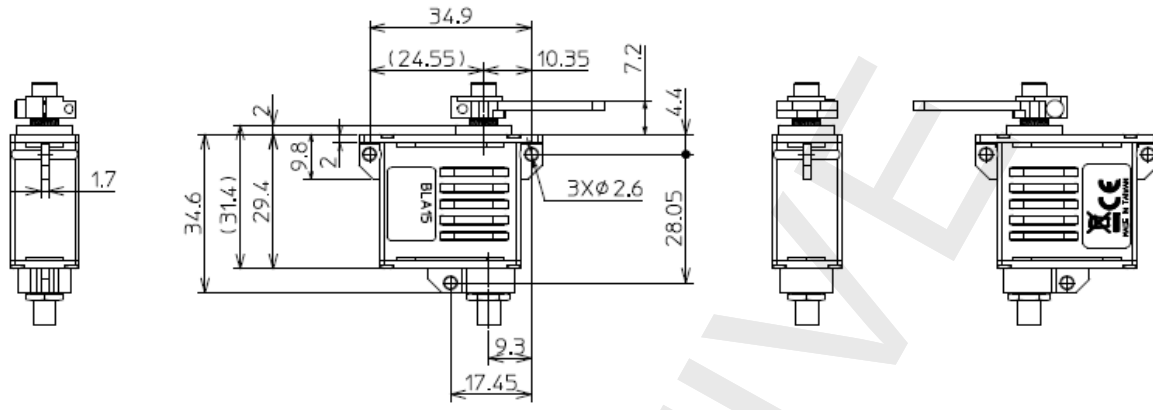
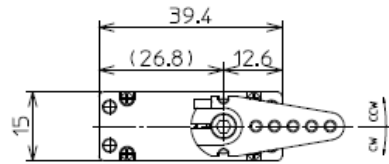
**All Specifications are subject to change without prior notice.**

**Caution**

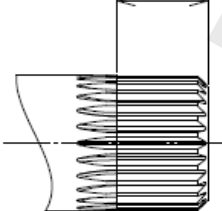
- This product SHOULD NOT been used for the devices that is directly related to human life.
- Keep the servo away from an object which produces a strong magnetic field.  
There is a possibility of malfunction if the servo is affected by a strong magnetic field.

**Outer Dimension**

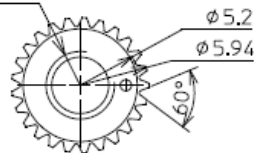
**BLA15-06H-AA1**



4 (Serration Length)



M3X0.5(defth=7.0)



**Sarrtion Size**

Standard Diameter :  $\Phi 6$   
Angle :  $60^\circ$   
Tooth : 25